

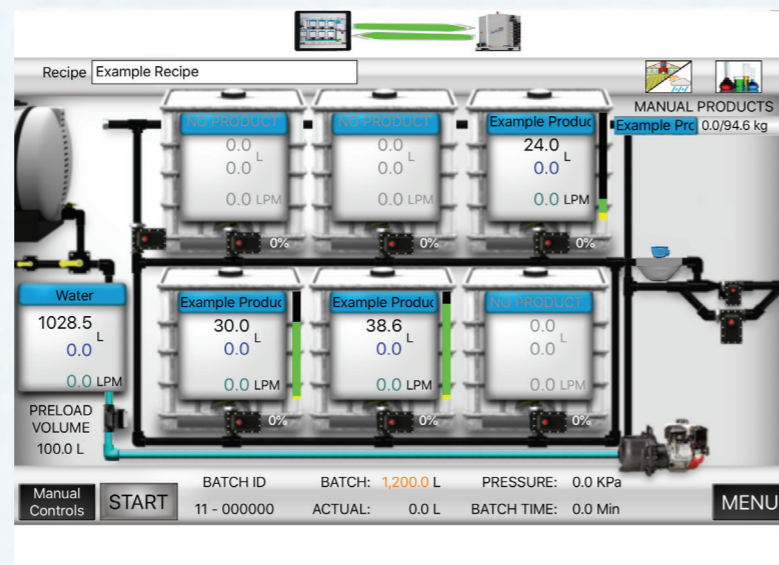


Data Features

QuickDraw iPad App

Utilise QuickDraw iPad App to create recipes and download data files. Download the app to your iPad and connect to QuickDraw via a direct Wi-Fi connection. The QuickDraw keeps a record of every batch loaded. Included in the record are:

- ▶ Unique Batch ID
- ▶ Date and Time Loaded
- ▶ Batch Time (Length)
- ▶ Farm and Field ID
- ▶ Wind Speed and Direction
- ▶ Temperature Chemical Name(s)
- ▶ EPA ID Number
- ▶ Amount of Chemical Loaded
- ▶ Tote/Shuttle ID (Inventory Tracking)



QuickDraw Remote Connectivity*

QuickDraw Remote Connectivity allows communication with QuickDraw via any web browser. Add the optional Remote Connection Gateway to enable communication. Remote connectivity features:

- ▶ Create New Recipes
- ▶ Download Historical Data
- ▶ Automated E-mail Notification of Loaded Batch
- ▶ GPS Coordinates of Batch Loading Location Logged

*To be released in Australia soon.



2016 Copyright SureFire Ag Systems

Eductors for Manual Products

QuickDraw Swing Down Eductor allows operator to work on ground level. Add manual measured products including dry AMS through the Swing Down Eductor.



QuickDraw Chem-Blade Eductor features the Chem-Blade for splitting, dumping, and rinsing jugs. Add manual measured products including dry AMS.



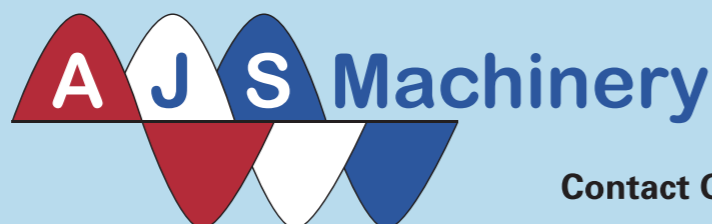
FINOVATION
2016 HONOREE

"Over the years of adopting new precision technology there are lots of things I've regretted every minute I've owned them, but not the SureFire QuickDraw. It's been worth every penny we invested in it. Speed, record keeping, and not being exposed to chemicals all-day, every-day are what make it worth the money for me".

Steve A. Johnson, Kansas

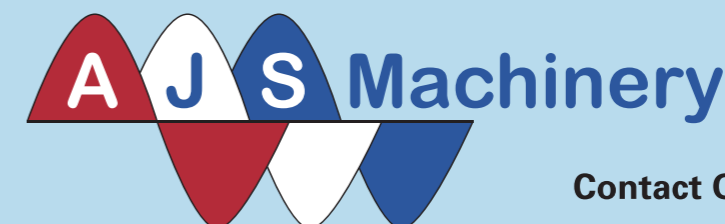


Distributed in Australia by:



Contact Oliver: 0475 633 959

Distributed in Australia by:



Contact Oliver: 0475 633 959

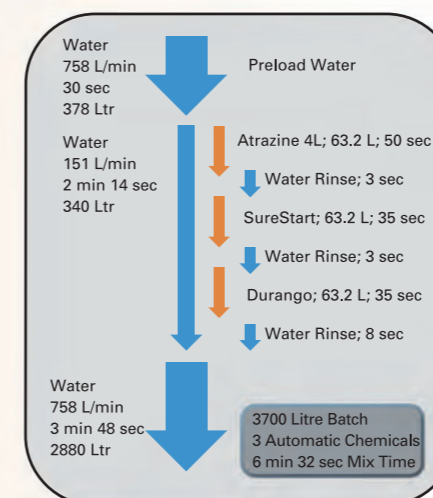


QuickDraw Max is a fully automated sprayer tender system. Start by creating a recipe – that is the applied application rates/hectare for each chemical in the batch. Recipes are saved and used every time you load that mix of chemicals. Enter the application rate/hectare you will be spraying and the size of load you need, either in total litres or total hectares to spray. QuickDraw calculates the correct amount of each chemical in the batch. Press start, QuickDraw automatically measures and loads each chemical as well as the correct amount of carrier and stops the pump when the batch is complete.

Models

- 4 Product
- 6 Product
- 6 Product with 2 - 2" Valves

Mix a 3700 Litre, 3 product batch in under 8 minutes



Venturi and Pump Suction Configurations

QuickDraw spray tender systems are available in two configurations – Venturi Suction and Pump Suction.

Venturi Suction – Transfer pump is located on the QuickDraw inlet. It pushes water across a venturi to create suction which draws chemical products through the mass meter and into the batch.

Pump Suction – Transfer pump is located on the QuickDraw outlet. Suction from the pump is utilised to draw chemical products through the mass meter and into the batch. This is more popular with users wanting higher batch concentrations eg. Aerial Applicators.

QuickDraw Lite provides mass flow measurement of chemicals with refined features and operation. QuickDraw Lite is a manual or semi-automated spray tender system. In manual operation open a product valve, watch the display until desired chemical amount has been measured into the sprayer and close product valve. In semi-automated operation enter the desired chemical amount, press start. When the set point is reached, the product valve automatically closes.

Models

- 6 Manual Valves
- 3 Automatic/3 Manual Valves
- 6 Automatic Valves

Distributed in Australia by:



Contact Oliver: 0475 633 959

Mass Flow Meter

Micro-Motion mass flowmeter requires no calibration. The mass flow meter measures product density, liquid mass and volume. As a result, it is able to measure any liquid with extreme accuracy regardless of the liquid's physical properties, specifically density, viscosity, or conductivity.



Closed System

QuickDraw is a closed system. Operator exposure to chemical is eliminated while mixing sprayer batches. Operators using a QuickDraw system routinely comment that the reduced exposure to chemicals has a huge benefit to them.

"Most importantly, safety comes to my mind first. Not having to handle individual chemicals every time I fill is a tremendous benefit".

Ben P.
Laake Ewald Farms
Unionville, MI

